

This document contains HOW-TO DIRECTIONS and TIPS on measuring and submitting for consideration your catch for either the Keowee Anglers Club (KA) Longest Fish Competition or Random-Match Tournaments. If you have questions or concerns regarding this document, please refer them to the Tournament Director at http://keoweeanglersclub.com/board_of_directors

The club believes that its requirements for submitting documentation of a catch for consideration are fairly simple. However, entries are denied each year for *incorrectly measuring and/or documenting the fish*. To be considered, the submission photograph must clearly show the following:

1. The entire fish
2. Measure from the mouth to the tail.
3. The mouth of the fish needs to be CLOSED and visibly touching the bump on the board
4. Measure in full inches, $\frac{1}{2}$ inches, and $\frac{1}{4}$ inches (rounded down to the closest quarter of an inch)
5. If the tail does not CLEARLY touch the mark (ROUND DOWN) to the nearest $\frac{1}{4}$ inch
6. You may pinch the tail or leave it natural
7. The ruler clearly displaying numbers and markings

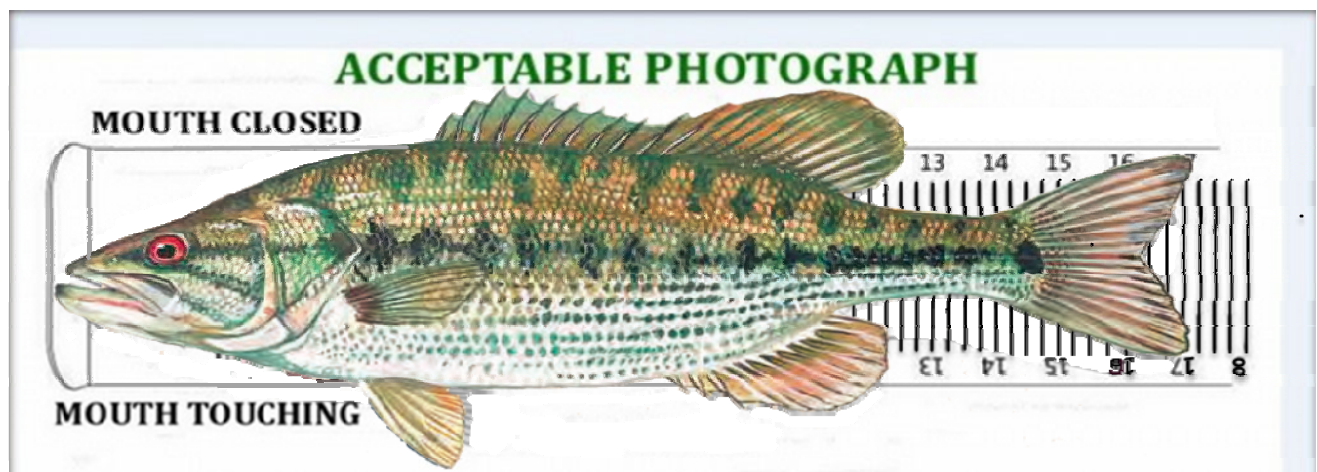
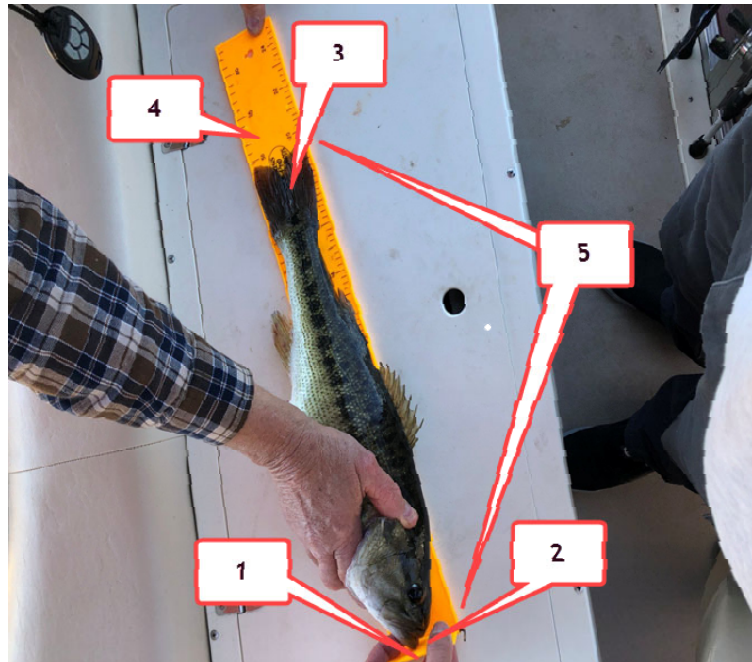


Illustration 1



1. FRONT against BUMP portion of the measuring device

2. The MOUTH closed

3. The TAIL flattened and pinched together

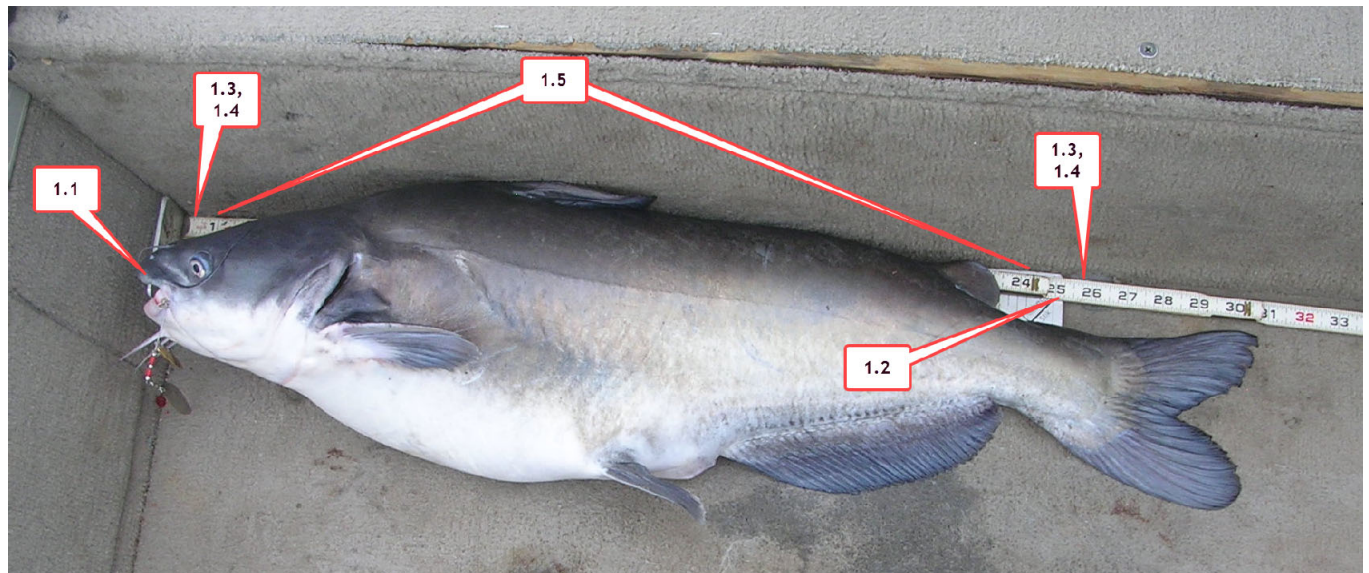
4. The RULER clearly displaying numbers and markings

5. The ENTIRE FISH

Actual photo submitted

MEASURING FISH LONGER THAN THE RULER

- 1) Option 1
 - a) Place the bump board against the side of the deck with "inch 0" against the side. (This will help when fish are too large to hit the "bump stop" of the ruler.)
 - b) Put a tape measure against the end of the first and extend it out beyond the end of the bump board.
 - c) Insure BOTH measuring devices are flush.
 - d) Insure BOTH measuring devices are straight
 - e) Insure that the numbers can be seen and read.



1.1 Place the bump board against the side of the deck with "inch 0" against the side.

1.2 Put a tape measure against the end of the first and extend it beyond the end of the bump board

1.3, 1.4 Insure BOTH measuring devices are flush and straight

1.5 Insure that the numbers can be seen and read

Measuring a fish longer than your measuring device, Option1

2) Option 2

- a) Arrange the fish exactly as instructed for a fish shorter than your ruler
- b) Allow the fish to hang off the end of the measuring device. (Because you are submitting your picture of the fish in the highest resolution, the judge can extrapolate its total length.)



- 2.1 Arrange the fish exactly as instructed for a fish shorter than your ruler.
- 2.2 Allow the fish to hang off the end of the measuring device.

Measuring a fish longer than your measuring device, Option2

MEASURING & SUBMITTING SMALLER GAME FISH (e.g., SUNFISH)

Many vertical stop rulers do not have graduations that start at 1 inch. For some rulers, the fish must be a minimum of 8 inches to 10 inches long for the tail to reach the markings with the nose at the vertical stop. To photograph a fish that is too short for its tail to reach the graduations, do the following:

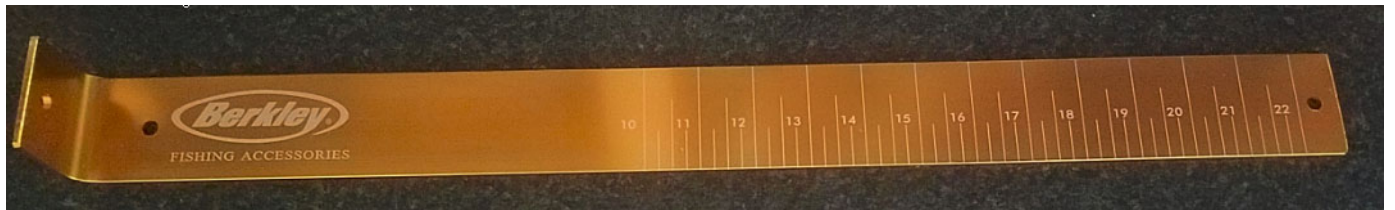
1. Place the fish on the ruler with the nose lined up with the 10-inch mark,
2. Align the tail down the marked portion of the ruler and Take the picture. (The person examining the photo can then simply subtract 10 inches from the measurement at the tail.)



Measuring a smaller game fish

TIPS TO ENSURE A SUCCESSFUL ENTRY

- 1) Use the highest RESOLUTION setting on your camera possible.
 - a) Android – CAMERA SETTINGS > PICTURE SIZE > (choose a picture size with the highest resolution number ex: 4032X3024)
 - b) APPLE – CAMERA SETTING > HDR > KEEP NORMAL PHOTO (select)
- 2) When emailing the picture, :
 - a) APPLE → select “ACTUAL SIZE” option
 - b) ANDROID → “KEEP ORIGINAL SIZE “
- 3) Be aware that, if you use a “gold” ruler, glare and with its white numbers may make the numbers unreadable and your entry unacceptable. (see picture below)



Gold ruler – not recommended



Submission refused because of glare

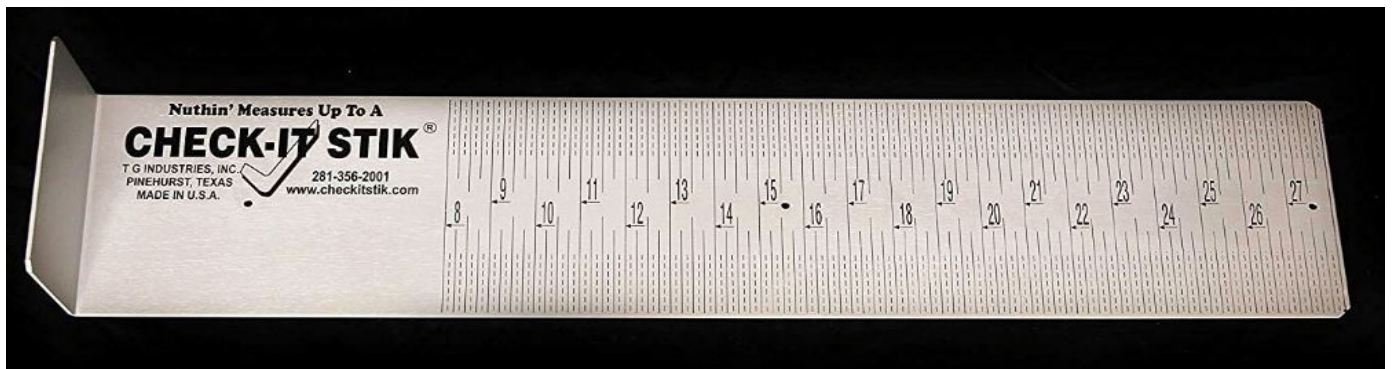
- 4) When photographing at night, aiming the FLASH “straight down” will create glare. Glare makes a clear view impossible. (Glare can be avoided by using the “Hawg Trough” measuring device, whose markings are much more visible in almost any light.)
- 5) To resolve most of the longer fish issues, KA would like the members to standardize on measuring devices that are a minimum of 24 inches.
- 6) However, you also have the option to create your own measuring device, BUT IT MUST BE APPROVED by the Tournament Director.

[Note from the Tournament Director

“A homemade ruler does not have to be approved ahead of time, but it does have to be approved. A photo of a homemade ruler may be submitted along with a separate picture of the fish. However, if at that time the ruler is not acceptable, then the fish will be disqualified. So, to make sure that a good catch is not wasted because of a ruler that does not qualify, it behooves makers of homemade rulers to submit them for approval at the time of the manufacture and not wait until they use it for the first catch”.]



HAWG TROUGH → recommended



CHECK-IT → recommended



Handcrafted → approved by Tournament Director

ADDITIONAL NOTES

1. As noted above, this document outlines the required measuring and submission criteria for consideration in the annual Longest Fish Competition. However, it is currently also the basis for measuring and submission of fish for the Random-Match Tournaments.
2. For Random-Match Tournaments, if you have a vertical stop that is less than 22 inches, you should carry a supplemental measuring device (ruler, paper tape ruler, etc.) for consideration of any fish longer than 22 inches.